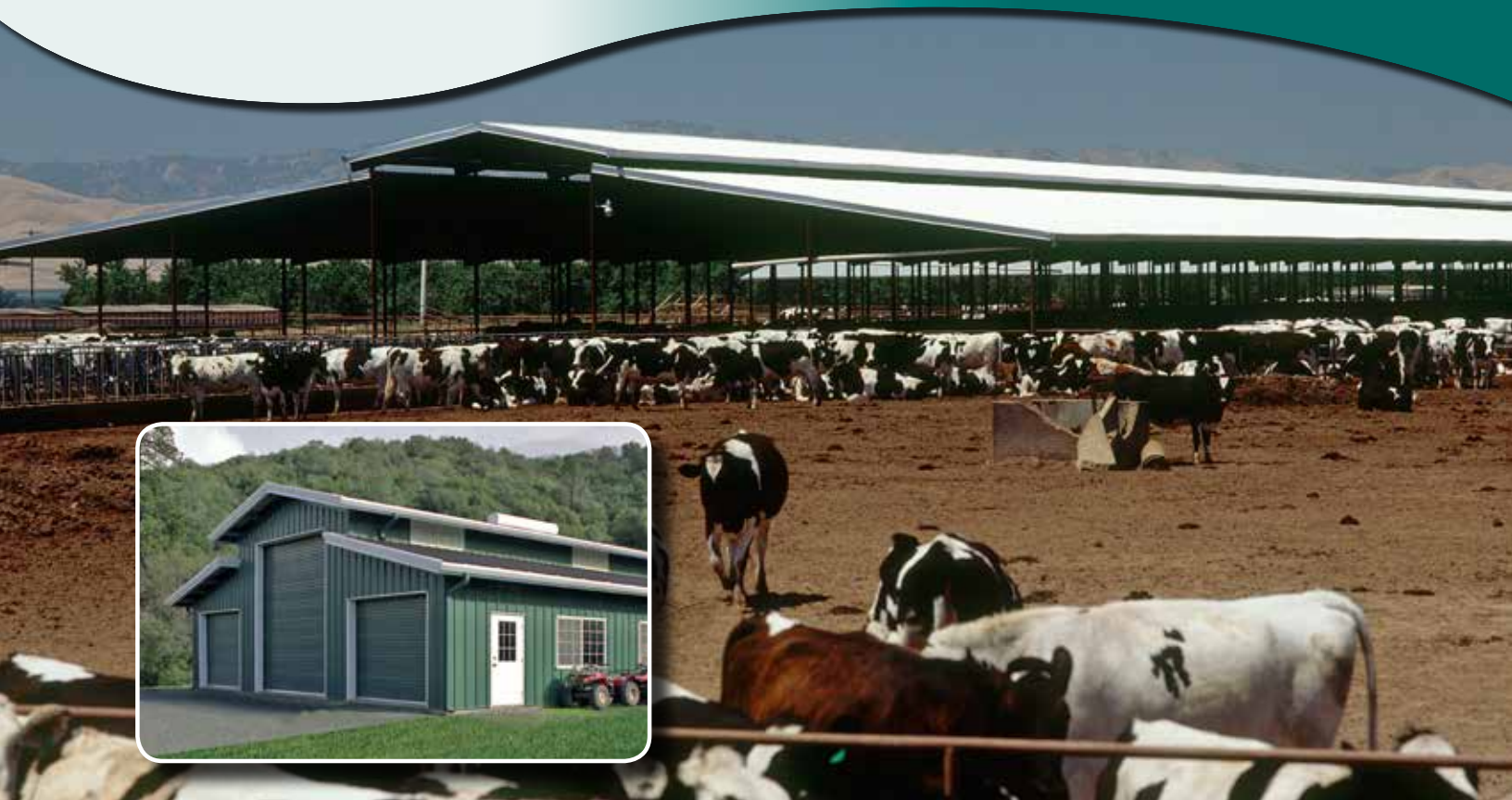


PBR Panel

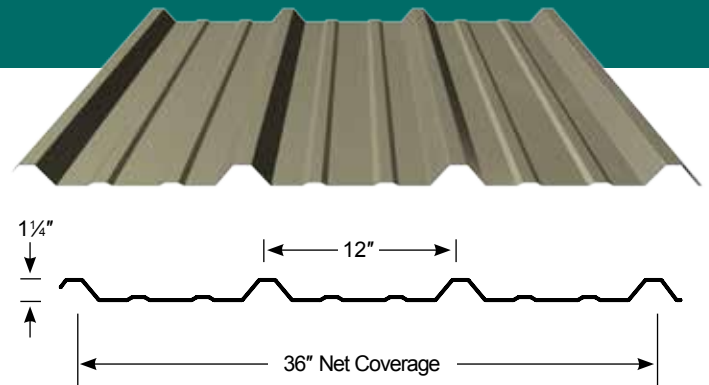


PBR Panel

PBR panel is an economical, structural, through-fastened roof or wall panel suitable for all-around general usage for exterior and interior applications. Ideal for agricultural or livestock coverage, post-frame, and pre-engineered metal buildings.

FEATURES AND BENEFITS

- 36" net panel coverage can be installed over solid substrates or spaced support members.
- Purlin-bearing leg speeds installation and improves the quality of panel side laps providing a consistent weather-resistant joint.
- Provides traditional metal roof or wall appearance with 1¼" high trapezoidal major ribs at 12" on center with minor ribs between each major rib.
- Trim packages available in the same gauge and color as the roof and wall panel.
- PBR panel can be installed on pitches as low as 1:12 with field applied mastic.
- Fiberglass Skylights panels are available in matching profile, inquire for slopes less than 1:12.



PANEL OVERVIEW

- Available in 8 Dura Tech® *nt* colors and ZINCALUME® Plus.
- ZINCALUME coated substrate, per ASTM A792, is standard and backed by a limited corrosion warranty on painted or unpainted panels excluding sustained exposure to animal and animal waste.
- Galvanized G90 coated substrate, per ASTM A653. Ideal for animal confinement available in Galvanized G90 Plus and Winter White only.

PBR PANEL

Cool DURA TECH[®] nt



REPRESENTATION OF COLORS MAY VARY DUE TO PRINTING LIMITATIONS. Sample color chips are available upon request.

The **Dura Tech[®] nt** system combines the protection of ZINCALUME with a highly durable **COOL** Resin technology to reduce the demand for energy and provide excellent color retention.

PAINT FINISH NOTES

All PBR panels are available in our 8 standard, 26 gauge, Dura Tech *nt* colors, as well as ZINCALUME Plus and Galvanized G90 Plus. Inquire with a sales representative for lead times and further information.

AVAILABILITY

PBR is available out of Sacramento, CA. Additional lead times apply on products supplied from a non-local facility.

FLASHINGS & TRIM

All trims and flashings are offered in our 8 standard, 26 gauge, Dura Tech *nt* colors, as well as ZINCALUME Plus and Galvanized G90 Plus. Inquire with a sales representative for more information.

OIL CANNING

All flat metal surfaces can display waviness commonly referred to as "oil canning." "Oil canning" is an inherent characteristic of steel products, not a defect, and therefore is not a cause for panel rejection.

LOAD TABLE (Please see technical product sheets for section properties and technical data)

Gauge	Span	Cond.	Allowable Inward Loads (lbs/ft ²) per Span (ft.-in.)										
			3'-0"	3'-6"	4'-0"	4'-6"	5'-0"	5'-6"	6'-0"	6'-6"	7'-0"	7'-6"	8'-0"
26	SS	f	100	74	56	45	36	30	25	21	18	16	14
		L/180	-	-	-	40	29	22	17	13	11	9	7
	DS	f	122	89	68	54	44	36	30	26	22	19	17
		L/180	-	-	-	-	-	-	-	-	-	-	17
	TS	f	152	112	86	68	55	45	38	32	28	24	21
		L/180	-	-	-	-	-	-	37	29	23	19	16

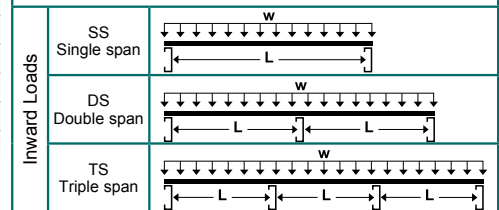
NOTES:

- Top values based on allowable stress. Bottom values based on allowable deflection of L/180.
- "-" denotes that the allowable load is limited by the allowable flexural bending stress.
- Steel conforms to ASTM A653 (Galvanized) or ASTM A792 (ZINCALUME) structural steel.
- Tabulated values are for positive (Inward) loading only.
- Values are based on the American Iron and Steel Institute (AISI) "Cold Formed Steel Design Manual" (2007 Edition).

Specifications subject to change without notice.

LOADING TABLE LEGEND

f - Load limited by flexural bending stress
 L - Span (Inches)
 L/180 - Load limited by a deflection of 1/180 of the span
 w - Distributed load



Five lasting advantages of steel . . .

- Outstanding Value
- Reduced energy costs
- Long-term protection
- Non-combustible
- Low maintenance