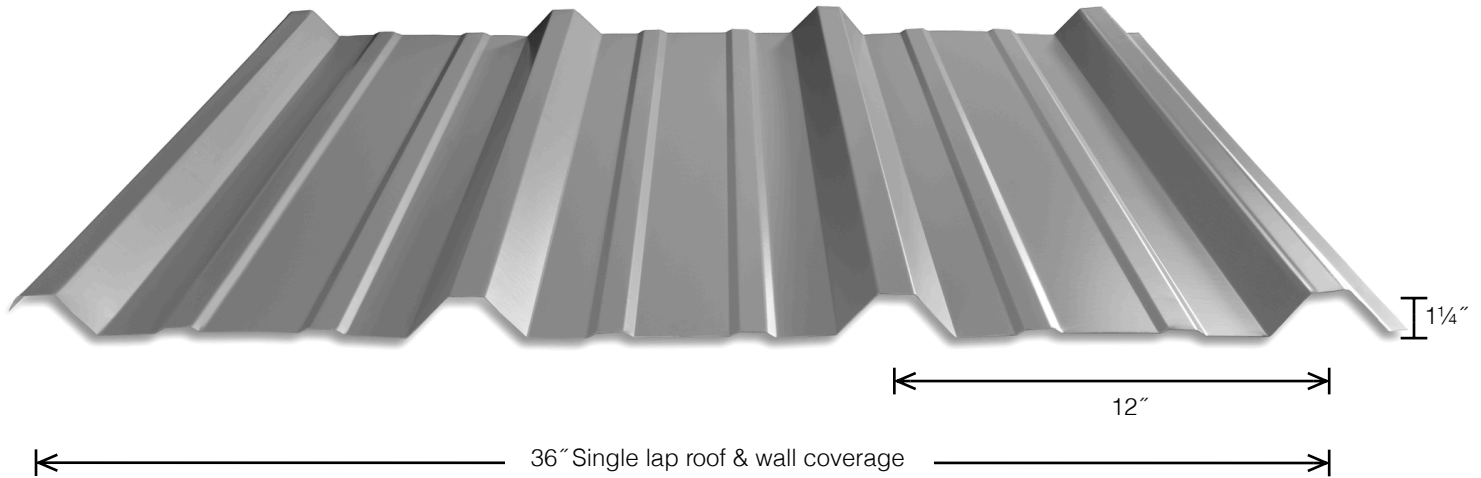
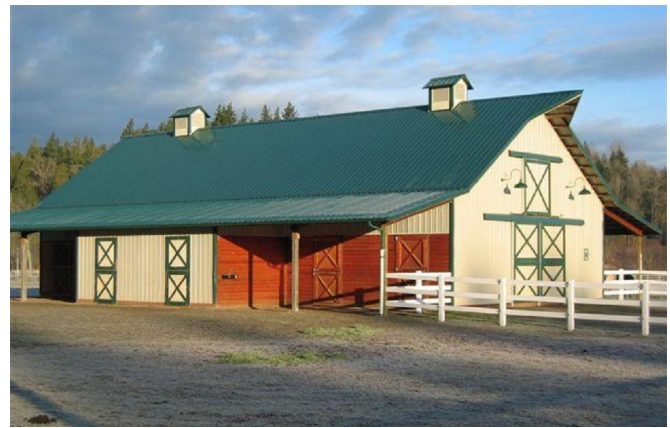
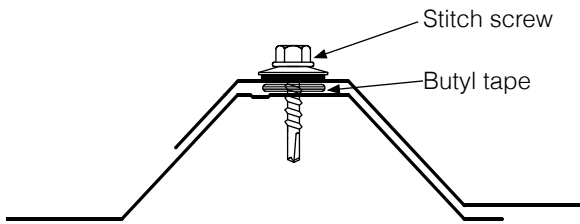


PBR ROOF AND WALL



Lap Detail



KEY FEATURES

- 29, 26, 24, & 22 gauge Tru-Gauge™ and .032 Aluminum
- ASTM 653 & 792, UL 90 rated when attached to steel purlin
- Custom lengths 1' to 35'-No short length cut charge
For longer lengths please inquire
- Recommended minimum pitch 1:12 when installed with Butyl mastic
- Long length flashing available to 21'
- Fiberglass and Polycarbonate skylight panels available to match profile
- Panel is available in a wide variety of "Cool" baked on ARMORTECH™ or "Cool" baked on Kynar® colors. 22 gauge Non-Galv. (cold rolled), 22 gauge Weathering Steel (A606), Bonderized and .032 Kynar® Painted Aluminum
- Easy-to-order standard and custom made trim and accessory packages available for specific project needs
- Color matched neoprene washered screws

Allowable Live Load in PSF			Span in feet (steel only)					
SPAN TYPE	GAUGE	KSI	3'	4'	5'	6'	7'	8'
SINGLE SPAN	22	50	165	93	54	35	24	18
DOUBLE SPAN	22	50	166	94	60	42	31	24
THREE OR MORE SPANS	22	50	205	116	75	52	38	27
SINGLE SPAN	24	50	119	67	40	26	18	10
DOUBLE SPAN	24	50	121	70	45	31	23	18
THREE OR MORE SPANS	24	50	157	90	58	40	29	20
SINGLE SPAN	26	80	111	60	35	23	16	11
DOUBLE SPAN	26	80	143	80	47	30	21	16
THREE OR MORE SPANS	26	80	155	89	57	35	24	20

MATERIAL SPECIFICATIONS

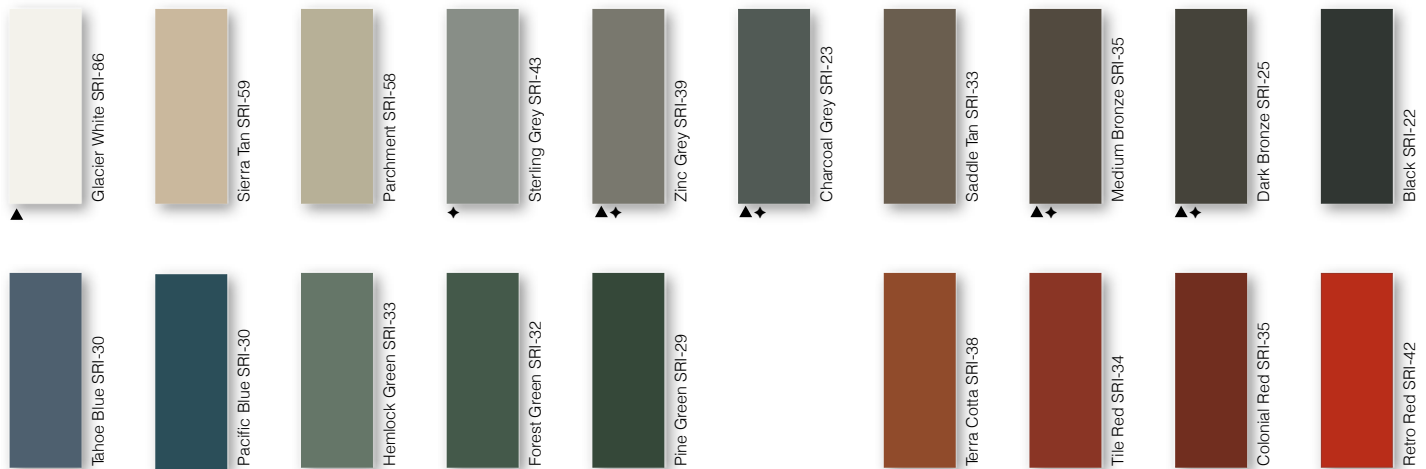
- 29 gauge ArmorTech™ Painted Steel
.014" (thickness prior to painting)
G-90 Galvanized or AZ-50 - Glacier White only
- 26 gauge ArmorTech™ Painted Steel
.019" (thickness prior to painting)
G-90 Galvanized or AZ-50
- 26 and 24 gauge bare Zinalume® Plus with
Clear Acrylic Coating-AZ-50
- 26 gauge G-90 Galvanized
- 24 gauge Kynar 500® Painted Steel
.0236" (thickness prior to painting)
G-90 Galvanized or AZ-50
- ▲ 22 gauge Kynar 500®
.029" (thickness prior to painting)
G-90 Galvanized or AZ-50
- ◆ .032 Kynar 500® Painted Aluminum
- Kynar® and substrate testing data available
(See website)

STANDARD COOL ARMOR TECH™ SMP COLORS 40-Year Residential Manufacturer's Limited Warranty

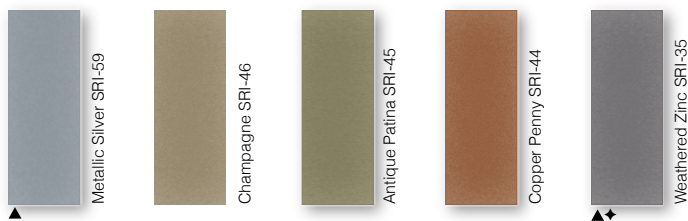


40-Year Residential/ 20 and 30 Year Commercial Manufacturer's Limited Warranty

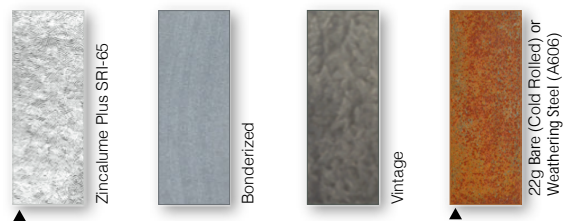
STANDARD 24g COOL KYNAR 500® COLORS



METALLIC COOL KYNAR 500® COLORS



SPECIALIZED MATERIAL



These printed chips provide a close representation of the colors.
Metal samples are available upon request.
Coatings are low gloss 10-15% sheen

****Oil canning is not a cause for material rejection****



Standard Panels			
Gauge	Color	LBS SQFT	LBS LF
26	ArmorTech	1.02	2.92
24	Kynar	1.2	3.45
22	▲	1.51	4.33
.032 Alum	◆	.56	1.62